
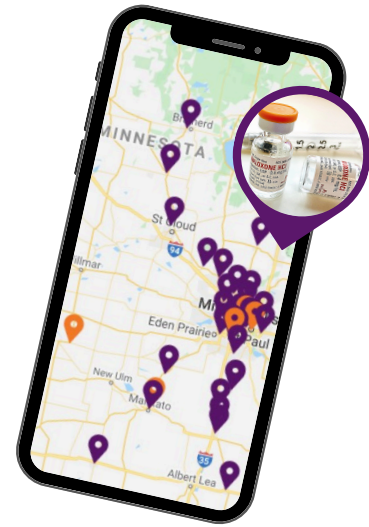


NAP

 **NALOXONE
ACCESS POINT**






An Overdose Prevention Program by the Steve Rummier HOPE Network

What is a NAP?

A Naloxone Access Point (NAP) is a publicly accessible pick-up site for naloxone, the lifesaving opioid overdose antidote. As a registered NAP, the Steve Rummier HOPE Network will provide your organization with naloxone kits and fentanyl test strip kits, tools that can help reduce opioid overdose deaths in your communities. These kits include QR codes that link to training and support resources. Our free online naloxone training course covers topics such as how to recognize an opioid overdose, how to administer naloxone, and how to safely store your kit.

Why are NAPs so important?

-  NAPs improve regional naloxone accessibility.
-  NAPs reduce stigma through public identification to normalize naloxone as a public health resource.
-  Community pickup sites provide anonymity to those seeking kits — no insurance or personal info required!





LEARN MORE

 www.RummierHOPE.org

FOLLOW US!

     
@RummierHOPE

CONTACT

 hope@RummierHOPE.org
 (952) 943-3937

Steve Rummier
HOPE
NETWORK

NAP



How will SRHN support my organization as a NAP?

Program Welcome Kit

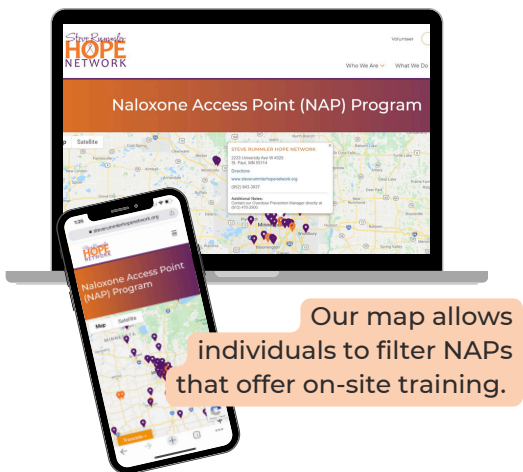
All NAPs receive a welcome kit which includes a window decal for their organization, and access to a digital press kit with materials to promote their participation in the program — we encourage our NAPs to spread the word about naloxone and its availability in their communities!

Naloxone and Fentanyl Test Strip (FTS) Kits

SRHN keeps NAPs stocked with naloxone and fentanyl test strips. Requesting more kits is simple and can be done in minutes through our online partner portal request form!

Training Support and Coaching (Optional)

NAPs are welcome (but not required) to offer on-site overdose response training to individuals picking up a kit. SRHN provides digital training materials and coaching for any interested trainers.



Program Requirements:

- 📍 All NAP partners will be identified on a statewide map hosted on the SRHN website.
- 📍 NAPs must be open to the public and have regular hours of operation. *Individual residences cannot be NAPs.*
- 📍 NAPs must maintain onsite supplies, request kits as needed, and complete a quarterly inventory report.



LEARN MORE

 www.RummlerHOPE.org

FOLLOW US!

     
@RummlerHOPE

CONTACT

 hope@RummlerHOPE.org
 (952) 943-3937

